

Name _____

Unit 1: Introduction to Functions Review

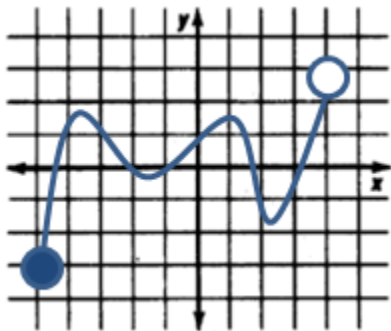
1. Fill in the blank for the quadratic function represented by the table below.

X	Y
-3	12.6
-2	5.6
-1	1.4
0	0
1	1.4
2	5.6
4	

Month	Attendance
Feb.	3
April	20
June	25
Aug	45
Oct	33
Nov	?

2. Carla was keeping track of attendance at the drive-in theater in Peaster. The table below shows the number of people that attended in the given months. Based on the data, how many people attended the drive-in in November?

3. For the data shown below, determine the domain and range.



Domain: _____

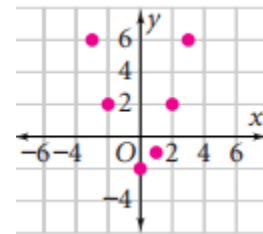
Range: _____

Year	Population (millions)
0	4457
5	4855
10	5284
15	5691
20	6080

SOURCES: U. S. Census Bureau.
Go to www.PHSchool.com for a data update.

Domain: _____

Range: _____



Domain: _____

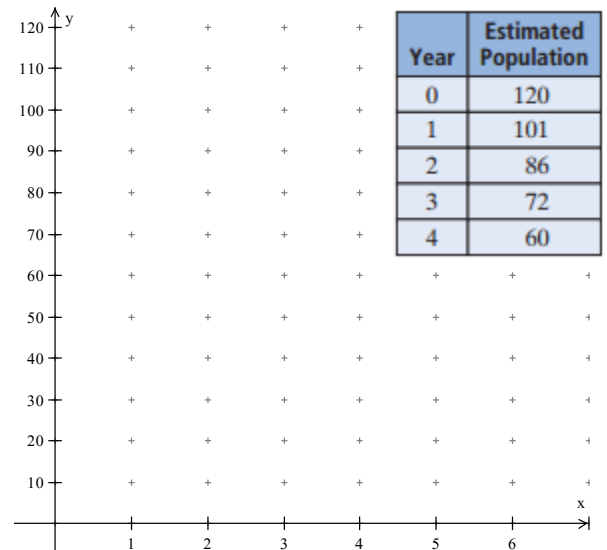
Range: _____

4. Suppose you are studying frogs that live in a nearby wetland area. The data in the table were collected by a local conservation organization. They indicate the number of frogs estimated to be living in the wetland area over a five year period. Plot the scatterplot of the data and determine the domain and range of the data.

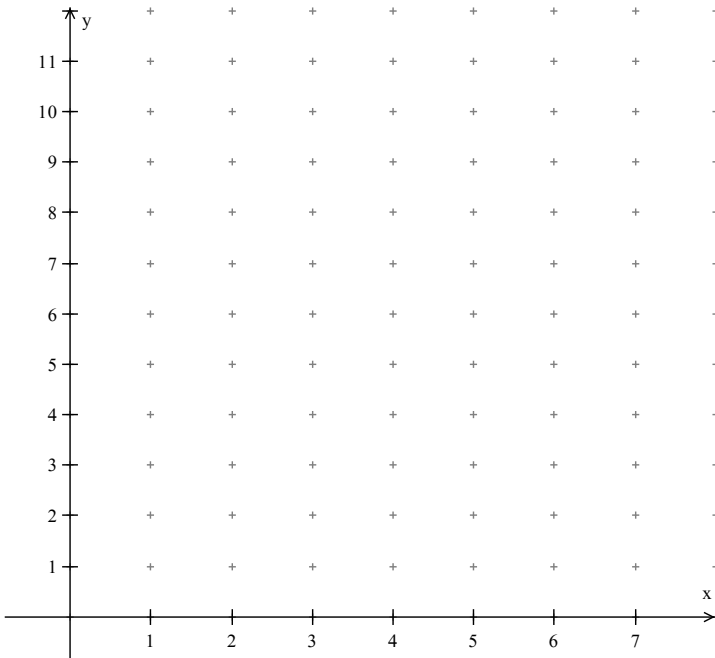
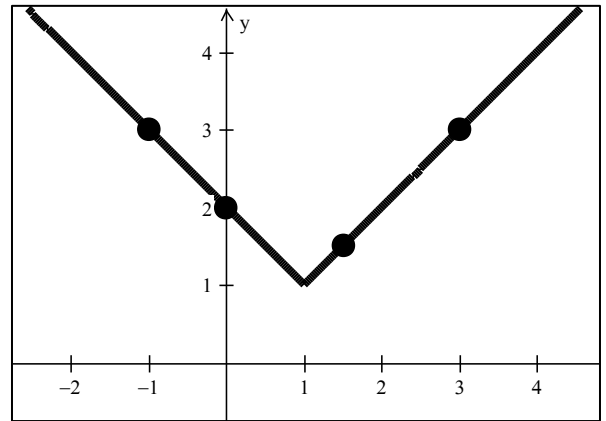


Domain: _____

Range: _____



5. Find the domain and range for the function graphed.



6. Draw a graph and be sure to include any asymptotes for the parent function $y = 2^x$.

7. From the table shown, plot the scatterplot, draw a trend line, and calculate a regression equation. Predict the y-value for when $x=9$.

X	Y
0.4	7.8
1.2	7.1
2.0	6.8
3.1	6.0
4.5	5.2
5.7	4.3

Prediction: _____

